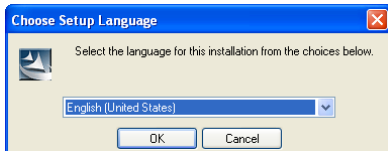


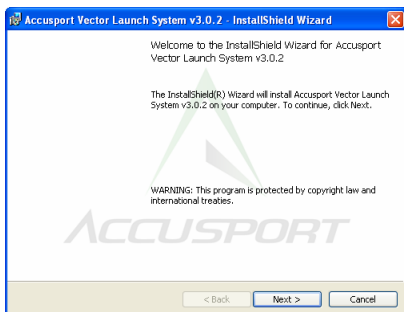
## Software and Hardware Installation

For Vector Launch System first time set up, you must install and configure the software on your computer. Do not connect the IEEE firewire cable to the Vector Launch System and your personal computer until you have completed the software installation.

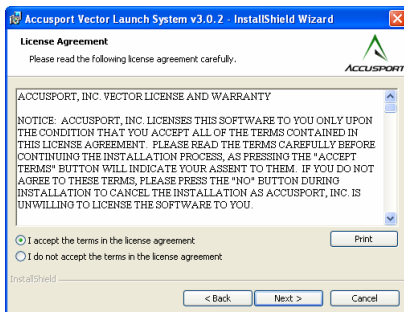
1. Insert the Vector v 3.0.2 CD into your computer and wait for the installation to start. If it does not start automatically, navigate to the CD and double-click on the setup.exe to start the installation.



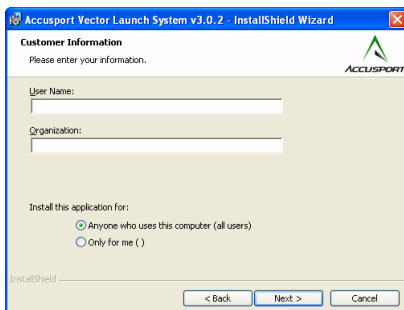
2. Select **English** for the language for the installation.



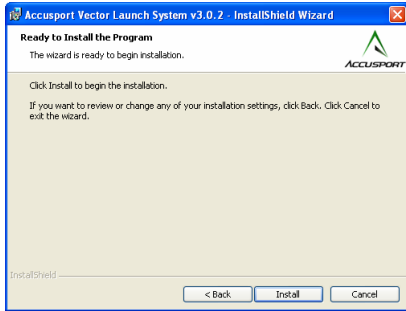
3. When the InstallShield Wizard Screen appears, click **Next**.



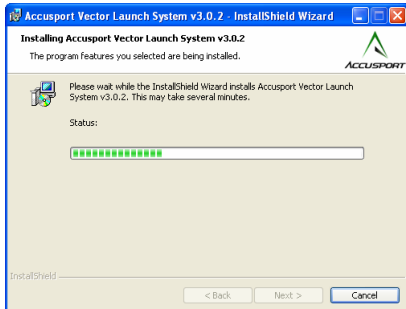
4. If you agree with the terms specified on the License Agreement Screen, select **I Accept**, and press the **Next** key.



5. Enter your name and organization information. We recommend that you select the **All Users** option. Press the **Next** key to continue the installation.



6. Click **Back** if you would like to review your information. Then click **Install**.



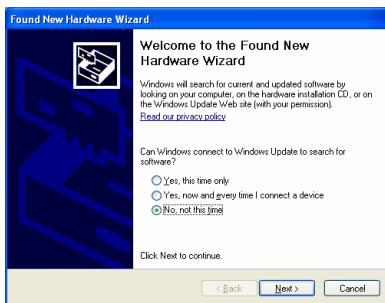
7. The program will now begin installing the files on your hard disk. A progress bar displays the status of the installation procedure.



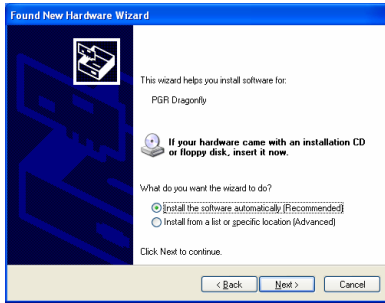
8. If you are installing the Vector Launch System software for the first time, a software installation screen will appear asking if you wish to continue the installation, click **Continue Anyway**.



9. When the software installation is complete, this screen will automatically appear. If you are installing the Vector Launch System software for the first time, click **Finish** and then power on the Vector Launch System and connect the firewire cable to the Vector Launch System and the personal computer.



10. If you are installing the Vector Launch System software and hardware for the first time, the Welcome to the Found New Hardware Wizard screen will appear. In response to the question, "Can windows connect to Windows Update to search for software?" click **No, not this time**. Then click **Next**.



11. You do NOT need to insert an installation CD to continue the Vector Launch System hardware installation. Click **Next**.



12. A Hardware Installation screen will appear asking if you want to continue the installation process. Click **Continue Anyway**.



13. The Completing the Found New Hardware Wizard screen will appear, click **Finish**.

Note: Never force in the IEEE cable into the port upside down. The Firewire plug is rounded on one side and square on the other. Check the alignment before insertion.

Note: Each time you turn it on your Vector, there will be a series of low beeps as it goes through a 30 second self-checking sequence.